





INTRODUCTION TO SYMBIO

From our beginning in Charlotte, to our expansion throughout the USA, our 40-year reputation has been built on providing products and services for businesses to adapt and evolve their workspaces. Meet SYMBIO.

We manufacture quality and versatile demountable wall solutions that are creative, modern, eco-friendly, locally sourced, and sustainably crafted, for interior building projects of any size. Flip through this book to see how SYMBIO can help to elevate your next project.

An advertisement for "Garages of Texas Suites". The ad features a collage of images showing various luxury vehicles and interior views of the suites. At the top, a large red diamond-shaped logo contains a white star and the text "Garages of Texas SUIITES". Below the logo, the text "OWN THE ROOF OVER YOUR RIDE" is written vertically. The bottom of the ad shows a close-up of a classic car's front end, including the grille and headlights. The overall design is sleek and emphasizes luxury and automotive passion.

LUXURY GARAGE SUIITES

OWN THE ROOF OVER YOUR RIDE

Garages SUIITES
OF TEXAS

TABLE OF CONTENTS

06 Product Line

08 Framed

16 Frameless

26 Groove

28 Doors & Accessories

32 SYMBIO+

34 Installation Services

37 Sustainability

38 Product Finishes & Specs

40 Finishes

42 Framed Specs

43 Frameless Specs

44 Groove Specs

47 Door Specs

48 Accessories Specs

51 Locations

SYMBIO PRODUCTS

Is your company looking for a flexible wall solution? Or perhaps, a minimalist wall solution that'll increase the natural light in your space? What about something more simple and cost-effective? Whatever you may need, SYMBIO's multitude of product lines have got you covered.

SYMBIO[®]

FRAMED



SYMBIO[®]

FRAMELESS



SYMBIO[®]

GROOVE



SYMBIO® *FRAMED*

FRAMED WALLS

SYMBIO Framed Walls provide value, performance, and versatility to meet the needs of today's interior office environments. The thoughtfully designed framework allows significant flexibility in design, materiality, and other options for custom applications.

Framed panels are intentionally designed to offer great design flexibility, a range of functionality, and increase overall performance. Every option has been carefully designed to provide maximum value. Our single glazed panels offer a clean and efficient way to introduce glass into your space. Combine them with our solid or multi-lite panels, and you can let your imagination drive your vision to create the office interior of your dreams.

For the Framed product directory proceed to page 42.













Framed Project

RoundPoint Mortgage came to SYMBIO looking for a wall solution that'd both bring in more natural light and would fit their hip and modern corporate aesthetic. Enter, SYMBIO's Framed wall solutions. Our single glazed panel offered the flexible glass option while integrating a mixture of Swinging and Sliding Framed doors in our Show White finish.





SYMBIO® **FRAMELESS**

FRAMELESS WALLS

More glass, less aluminum. SYMBIO Frameless is designed to maximize natural light and visual connectivity. The system transforms the close interaction of how buildings, employees, and the elements are coordinated in one living relationship.

SYMBIO Frameless is a high performance center glazed system that focuses on maximizing the amount of exposed glass with minimal overall framework. Using a simple kit of parts assures a smooth installation with beautiful joints for an exquisite finish even your most discerning clients will love!

For the Frameless product directory proceed to page 43.





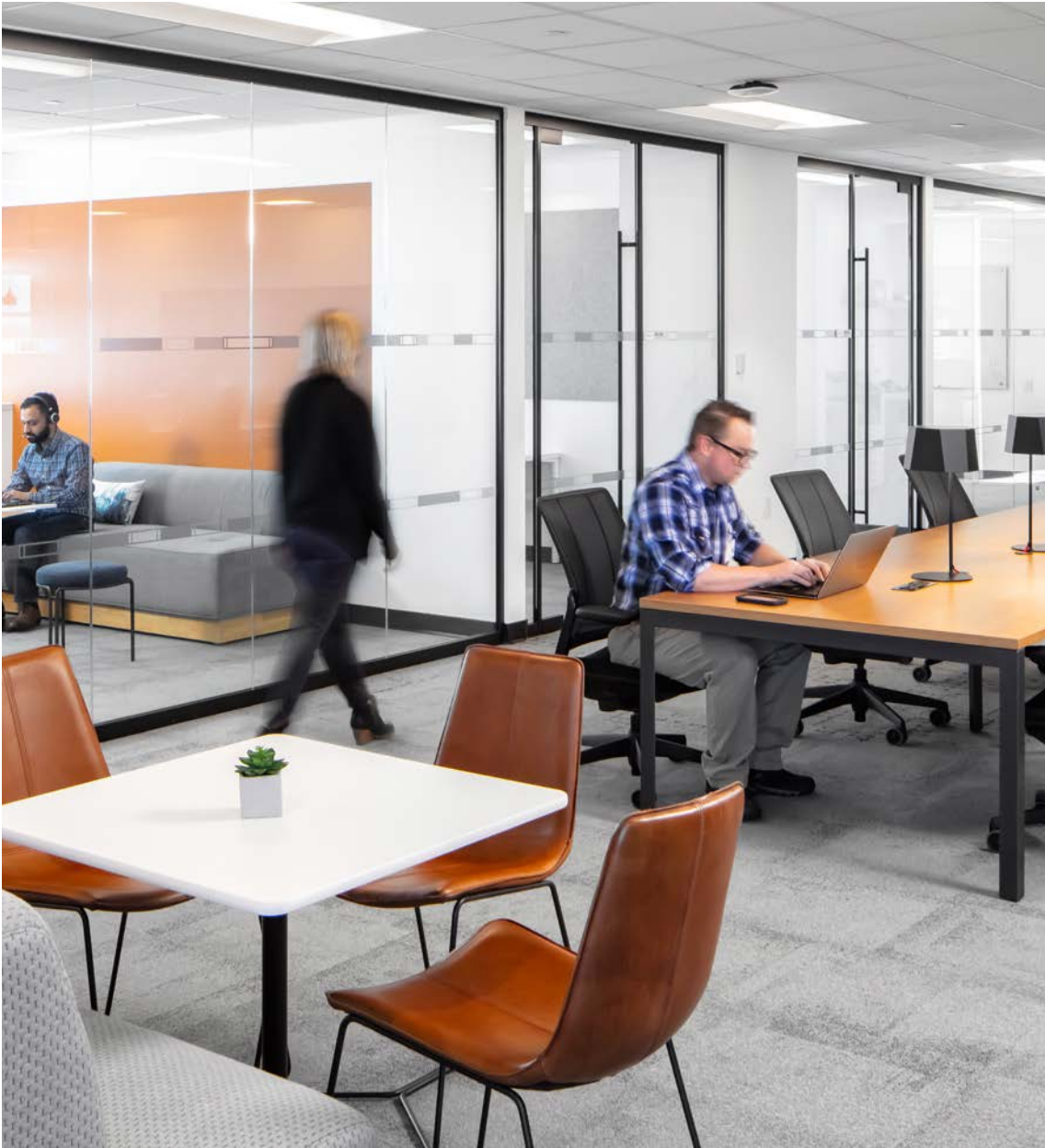












Frameless Project

A corporate office used SYMBIO's Frameless wall solutions to fit their modern and sleek aesthetic. Designed around both a minimal profile and kit of parts, SYMBIO's Frameless wall solutions are the ideal fit and function for full height glass walls that'll provide the perfect amount of acoustic separation and natural daylight within your space.





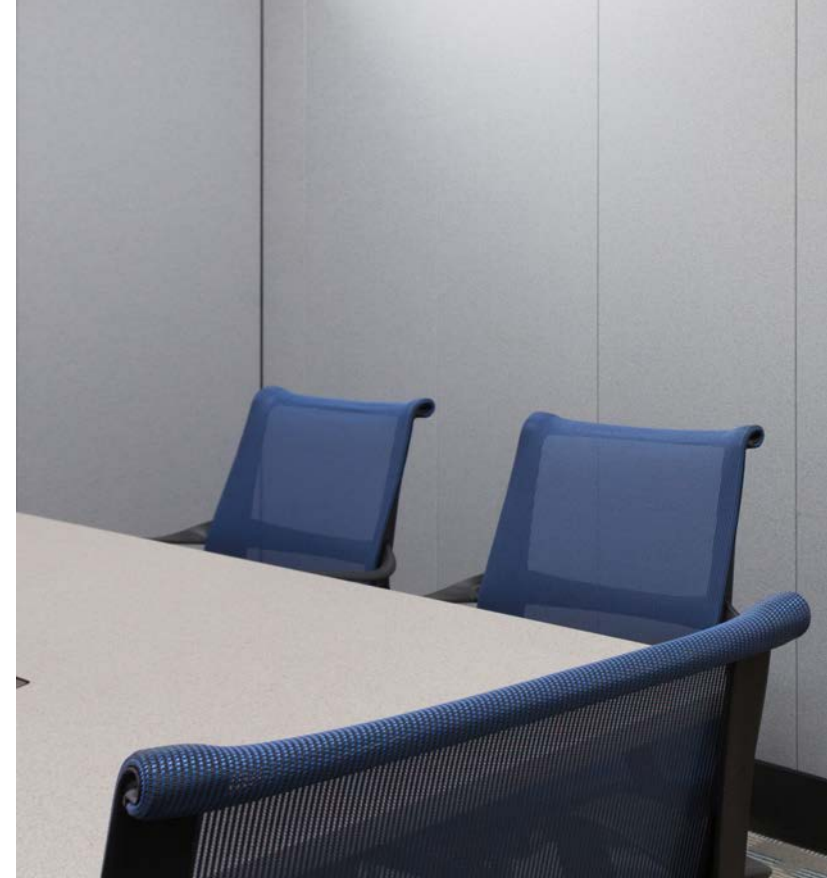
SYMBIO®
GROOVE

GROOVE WALLS

Fast and efficient, SYMBIO Groove offers a simplistic solution with multiple options for privacy.

A solution to the challenge of how to have the benefits of full height walls without the permanence and expense: SYMBIO Groove. Engineered with a progressive 'tongue and groove' panel design, Groove offers a practical and purposeful solution for your space division.

For Groove product directory proceed to page 44.





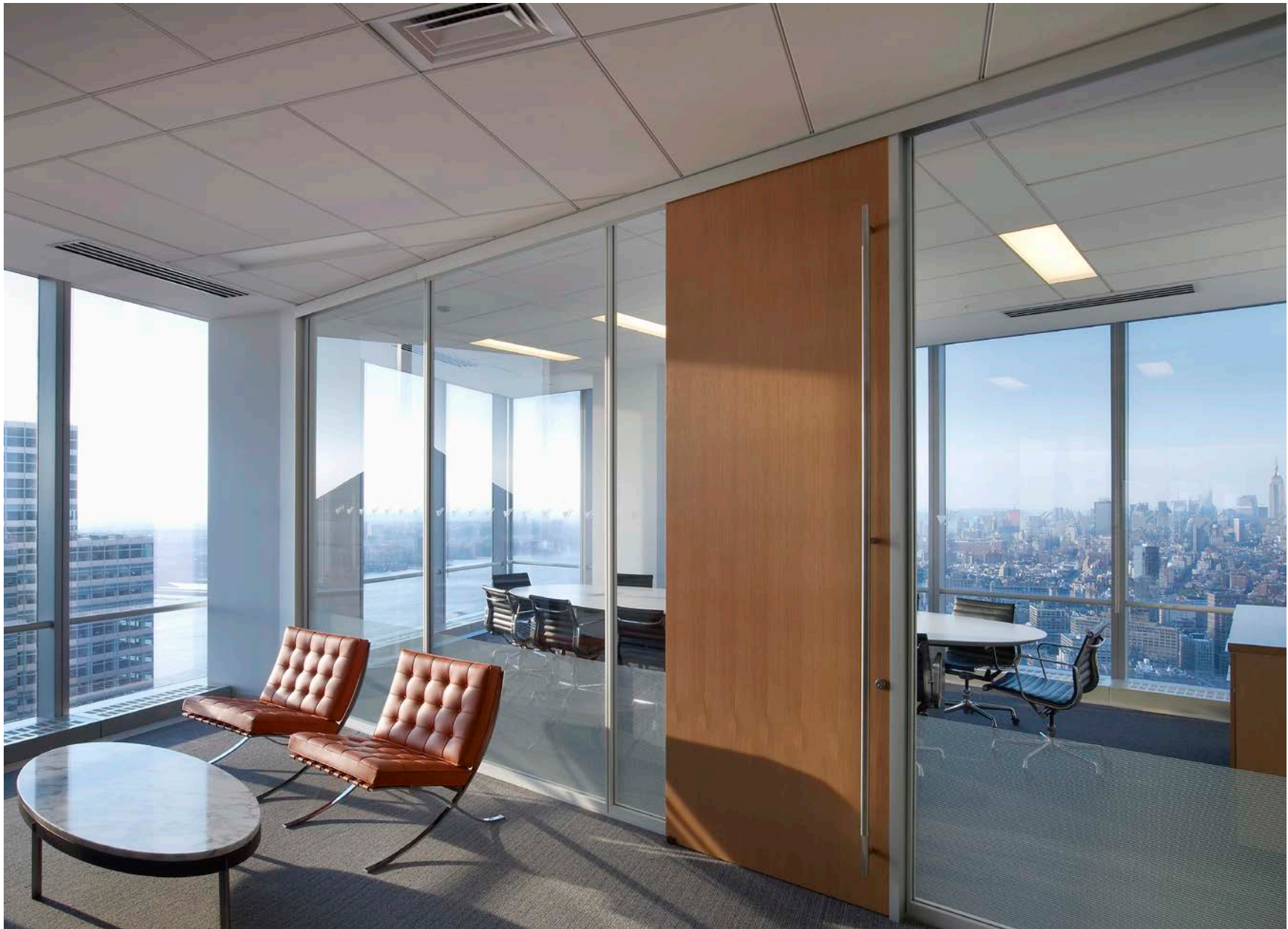


DOORS & ACCESSORIES

Accessing your space is all made possible with the door. Whether via hinge, pivot, or slide, the door is a vital element of interior design and SYMBIO offers a myriad of options to meet your vision.







SYMBIO+

We pride ourselves on our creativity and flexibility to help bring your design vision to life. Sometimes what you need can be found in a catalog, but when it can't, we will step in and design a fresh new solution to meet your needs.

At SYMBIO, custom is the standard. Our products are meticulously designed with flexibility in mind to seamlessly adapt to your unique requirements. We've gone the extra mile by manufacturing parts for discontinued product lines from other manufacturers, ensuring our customers can continue using their equipment. Additionally, we specialize in crafting tailored accessories for furniture to fulfill specific needs. And if you're in search of a customizable recycling program for a large institution, rest assured, we have successfully delivered on that front as well.





INSTALLATION SERVICES

More than a manufacturer. From 'Request For Quote', through design, manufacturing, and installation, we are with you for EVERY step.

We Know Walls. It's What We Do. We Know What It Takes.

SYMBIO is owned by Environamics, a 40-year leader in interior construction. We understand the process with proven timeliness, efficiency, and on-site communication. With two full-scale manufacturing facilities in the USA and in-house installation teams, we're there from start to finish.

When your manufactured product becomes an installation project, let us show you the SYMBIO Way. Verify in Field (VIF) dimensions, contractor coordination, material deliveries, and unique loading conditions, we've got it covered. Our team of Project Managers leads our clients through the installation process when job schedules are tight and occupancy dates are approaching. The ability to be flexible but cognizant of these changes, and communicating to all parties, is paramount for your client and our installation teams.



NOT
COMPLETE



SUSTAINABILITY

Our Commitment

SYMBIO is committed to doing its part in maintaining and improving the quality of the natural environment for all future generations through the implementation of sustainable design and manufacturing processes.

Our original movable wall system, developed over 40 years ago, was eco-friendly before 'green' building became popular. The ability to relocate entire walls and reconfigure office spaces creates tremendous value for environmentally conscious customers who are also concerned about their return on investment (ROI) of capital for their facilities.

LEED

No product or material can be LEED certified, only buildings that meet pre-defined criteria developed by the USGBC (United States Green Building Council) after rigorous examination can be deemed. Examinations are conducted by using one of the several rating systems LEED offers. New construction and major renovation or commercial interiors may be declared LEED Platinum, Gold, Silver, or certified based on the number of credits attained.

SYMBIO has a LEED accredited professional on staff who can answer any questions regarding the rating systems, provide detailed calculations before a project is installed, and document information required by the rating system chosen.

PRODUCT FINISHES & SPECS

SYMBIO wall solutions support a wide range of finishes - from powder coat to decorative aluminum coatings, wood veneer, vinyl, laminate, and even fabric. SYMBIO's got you covered. We even support custom finishes and those represented by other manufacturers for project consistency on some of our wall solutions. Reach out to a SYMBIO representative for more information.

Additionally, SYMBIO wall solutions offer the functionality and adaptability required by the office environments of today and the flexibility to meet the needs of those of tomorrow as well. With a myriad of different styles, sizes, functionalities, and mounts, let the SYMBIO team assist in finding your perfect wall solution.

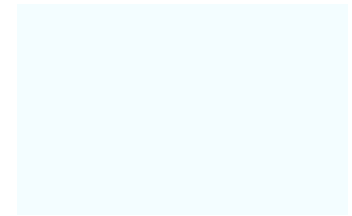
Reach out for any additional finishes at info@symbiowalls.com



STANDARD FINISHES



AN
Clear Anodized



AW
Apollo White



BA
Black Arch



BD
Bonded Aluminum



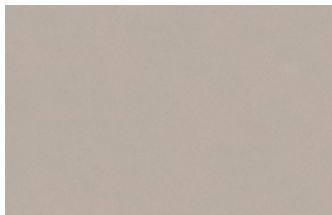
BM
Black Matte



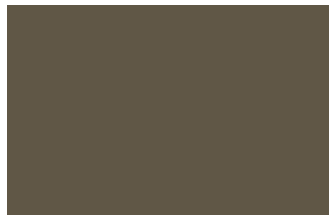
BU
Black Undertone



CG
Cosmic Grey



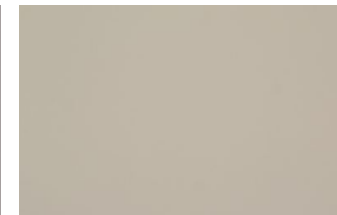
CH
Metallic Champagne



DB
Dark Bronze



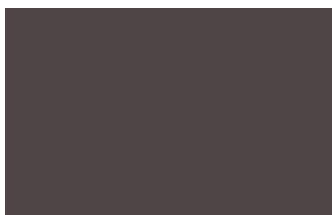
GS
Gray Storm



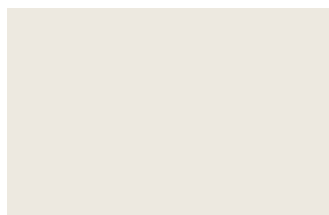
KH
Khaki



MB
Medium Bronze



MC
Mocha



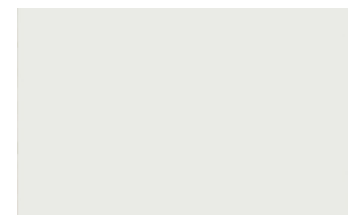
BA
Black Arch



SB
Steel Blue



SL
Slate



SW
Show White

DECORATIVE FINISHES



BT-W
Barnwood



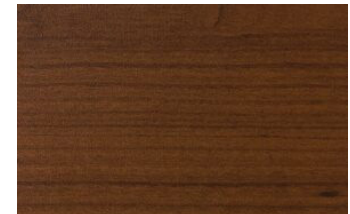
CB-W
Charcoal Barnwood



LM-W
Lighter Maple



SP-W
Southern Pecan



CT-W
Super Cherry



DW-W
Super Dark National Walnut



DT-W
Super Douglas



LW-W
Super Light National Walnut



MT-W
Super Mediterranean



OT-W
Super Oak

Note: Color samples are representative of the material to be supplied, and may not indicate an exact match; some variation may occur. Finishes represented on this page may not reproduce correctly if printed.

SYMBIO[®] FRAMED



GLAZED

- Single or double glazed options
- Double - These come in two 1/4" lites of glass with a 2-1/4" air gap and factory-assembled
- Supports 1/4", 3/8", and 1/2" thicknesses

SOLID

- Available in insert, outsert, and flush configurations
- Substrates - Steel, MDF and tackable
- Finishes - Vinyl, fabric, plastic laminate, back painted glass, and powder coat

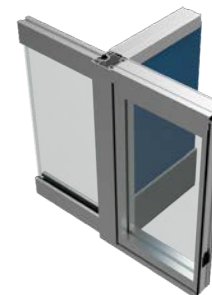
DIVIDED LITE

- Horizontal and vertical panel frame subdivision options
- Asymmetrical configuration capable
- No division modules to follow

SYSTEM ATTRIBUTES

- Unitized - Factory assembled panels shipped and ready for installation
- Basic panel frame dimensions:
 - » 2-1/4" deep
 - » 5/8" vertical framing components
 - » 1" and 2" horizontal framing components
- System height ranges up to 12' in 1/2" increments
- Panel widths range from 6" to 52" in 1/16" increments
- Native adjustability accommodates a range of +/- 3/4" (can include an add-on component to increase the height by 1" for extreme situations)
- Base height options - 0", 4" and 6"
- Connection via resting on carpet with ceiling attachment or free-standing
- Electrical, data, and audio/visual integration capable
- Acoustical performance ranging from 34 to 49 STC

SYMBIO[®] FRAMELESS



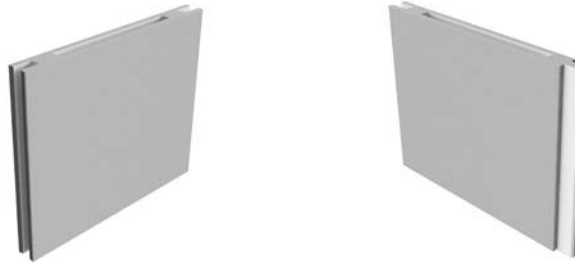
SINGLE GLAZED

- Glass lite centered in track
- Supports 3/8" and 1/2" glass substrates
- Tempered
- Laminated (recommended for best acoustical performance)

SYSTEM ATTRIBUTES

- 2 1/2" x 1 5/8" single piece top track
- A two-piece lower track is allows for efficient installation (with 1" overall tolerance)
- Up to 40 STC
- Maximum height for the walls is 10'
- Engineered to work with multiple door types and the entire family of SYMBIO products

SYMBIO® GROOVE



PRIVACY

- Provides both visual and acoustical privacy at floor to ceiling height, with the ability to integrate glass clerestory
- Hard surface or beveled edge gypsum available.

SYSTEM ATTRIBUTES

- Unitized - Factory-assembled panels shipped and ready for installation
- Basic panel frame dimensions:
 - » 2-1/4" deep
 - » 2 piece 5/8" gypsum panels laminated on 1" construction core
 - » Progressive design with tongue and groove, double groove, and make up panel configurations
- Tongue and Groove - Simple side 1 and 2 options
- Double Groove - Allows for end run and modular connections
- Groove Connection - Panel connection allows for seamless joint and quick installation

FLEXIBILITY

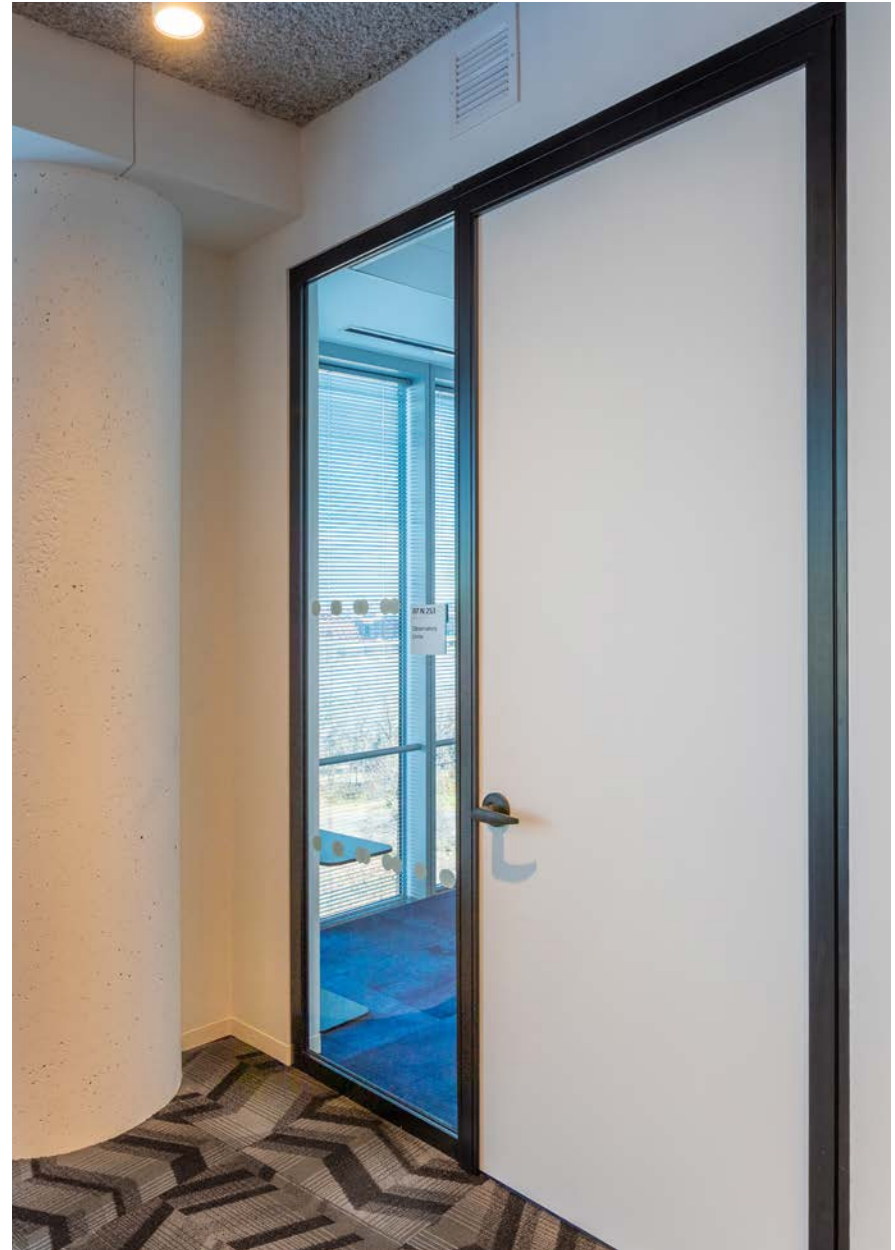
- Kits containing minimal parts are available
- Onsite customization and configuration available
- Standard Class "A" fire rated vinyl and fabric wall coverings available
- Integrates with all of the SYMBIO family of products

INTEGRATION

- A SYMBIO standard 8-wire electrical system can be designed in a horizontal base raceway or in-panel
- Slotted standard designs are available to match a client's furniture layout

- System height ranges up to 10' in 1/2" increments
- Standard panel width of 24" with Groove Wall Systems. Make up panels can be designed for field fit to any dimension needed
- Panels can be field adapted for vertical dimension constraints
- Base height options are 4" and 6"
- Connection via resting on carpet with ceiling attachment
- Electrical, data, and audio/visual integration capable
- Acoustical performance ranges from 34 to 40 STC





DOORS

ALUMINUM GLASS HINGE

- There are multiple frame design options available:
 - » Thin, medium and wide stiles
 - » ADA compliant 10" bottom rails
 - » Supports 1/4", 3/8" and 1/2" glass lites
- Supports any available door hardware suited for 1 3/4" hollow aluminum doors
- Designed to glaze from 1/4" up to 1/2" glass
- Available in sliding, hinge, offset pivot, bi-fold and telescopic configurations

ALUMINUM GLASS/WOOD SLIDE

- Suitable best for SYMBIO Frameless (wood or aluminum)
- Sliding doors are 1 3/4" thick
- Single and double configurations available
- It comes standard with soft open/close capabilities with jamb posts for acoustic seals

GLASS PIVOT

- Suitable best for SYMBIO Frameless
- Uses an integrated center pivot closer with a standard 1/2" tempered glass leaf
- Various architectural pulls and hardware can be added
- Multiple mount options:
 - » Center patch pivot
 - » Offset patch pivot
 - » 4" tapered bottom rail with pivot

GLASS SLIDE

- Suitable best for SYMBIO Frameless (wood or aluminum)
- Single and double configurations available
- Uses a minimalist track/valance with a 1/2" clear tempered leaf
- Standard or locking ladder pulls can be used
- Soft open/close capabilities included with jamb posts for acoustic seals

WOOD HINGE

- This is a flexible door option
- Doors are standard 1 3/4" flush wood veneer construction. Other finishes include paint, laminate, or unfinished
- Available in sliding, hinge, offset pivot, bi-fold and telescopic configurations
- Solid or with glass view lites (1/4", 3/8" or 1/2" glass available)
- Supports any available door hardware suited for 1 3/4" hollow aluminum doors

BI-PARTING (TELESCOPING)

- Utilizing aluminum/glass, wood, or frameless door leafs, the bi-parting and telescoping function allows for full openness to any large space or conference room
- Single and double configurations available

ACCESSORIES

DOOR PULLS

- Complimentary to any door type
- Multiple finishes available
- Mounting options include through door and on glass
- Ladder Pull (18" and up)
- Locking Ladder Pull (Locking Down or Up)
- ADA Staggered Pull (Bottom Rail Clearance)

DOOR CLOSERS

- Integrated closers with standard center pivot and offset swinging functions are available
- Concealed Closer
- Surface Mounted Closer
- Glass Patch Closer
- Glass Rail Patch Closer
- Butt Mortise Hinge Closer

LOCKING HARDWARE

- Can work with any major commercial hardware manufacturer
- Cylindrical Lockset
- Mortise Lockset (Swing & Framed Sliding)
- Glass Patch Lockset
- Electric Strike
- Maglock

ACCESS

- Random keyed
- Master keyed
- Card reader
- Biometric reader

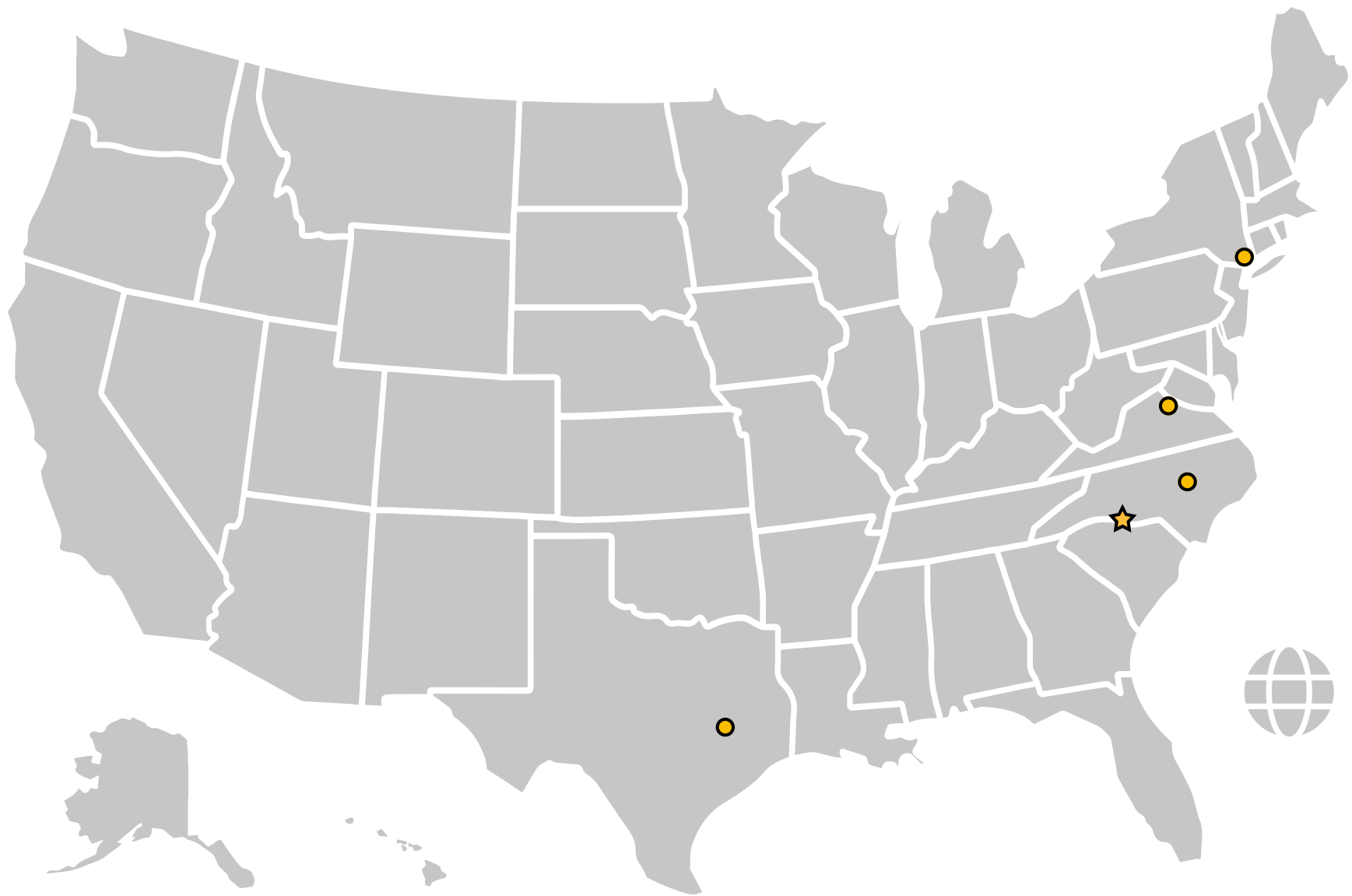
SWING DOOR HARDWARE

- Can be used with any SYMBIO door
- Butt Hinge
- Center Pivot Patch
- Center Pivot Rail
- Offset Floor Pivot

MISCELLANEOUS

- Room schedulers
- Roller latches
- Barn door hardware





LOCATIONS

No matter where you are in the world (yes, we're global!), we've got you covered. See where our SYMBIO team is located throughout the country. Headquarters are in Charlotte, North Carolina.

Charlotte HQ

13935 South Point Blvd
Charlotte, NC 28273
Phone: (704) 376-3613

Dallas

14035 Distribution Way
Dallas, TX 75234
Phone: (972) 247-2647

Washington, D.C.

7311 Lockport Place
Lorton, VA 22079
Phone: (703) 339-3882

New York

267 5th Avenue
Suite 301
New York, NY 10016
Phone: (917) 567-7659

Raleigh

3199 Glenn Royal Rd.
Suite 109
Raleigh, NC 27617
Phone: (919) 786-0540

Visit Us at: Symbiowalls.com

ENVIRONAMICS

Want to know about our parent company?
Visit Environamics.com

Terms & Conditions

If you choose to use our Service, then you agree to the collection and use of information in relation with this policy. The Personal Information that we collect are used for providing and improving the Service. We will not use or share your information with anyone except as described in this Privacy Policy.

The terms used in this Privacy Policy have the same meanings as in our Terms and Conditions, which is accessible at www.symbiowalls.com, unless otherwise defined in this Privacy Policy.

